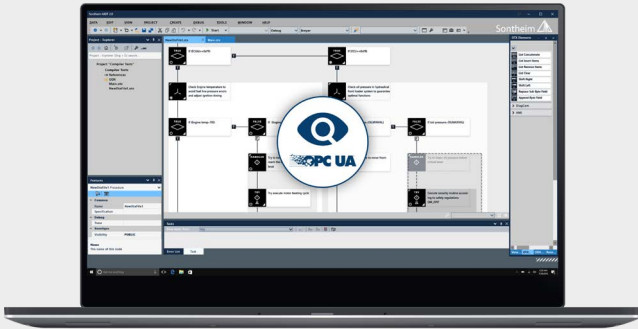


Modulares Diagnostic Tool 2.0

Innovative machine park monitoring










MDT[®] 2.0

The Modular Diagnostic Tool 2.0 offers an OPC UA server and client in addition to ODX and OTX standard. This ensures comprehensive and simple operability, which is additionally supported by Visual Studio[®].

Key Features

-  **OPC UA server & client**
-  **ODX acc. to ISO 22901-1**
-  **OTX acc. to ISO 13209**
-  **Multi platform support**
-  **High-performance runtime system**

Innovative machine park monitoring – based on standards

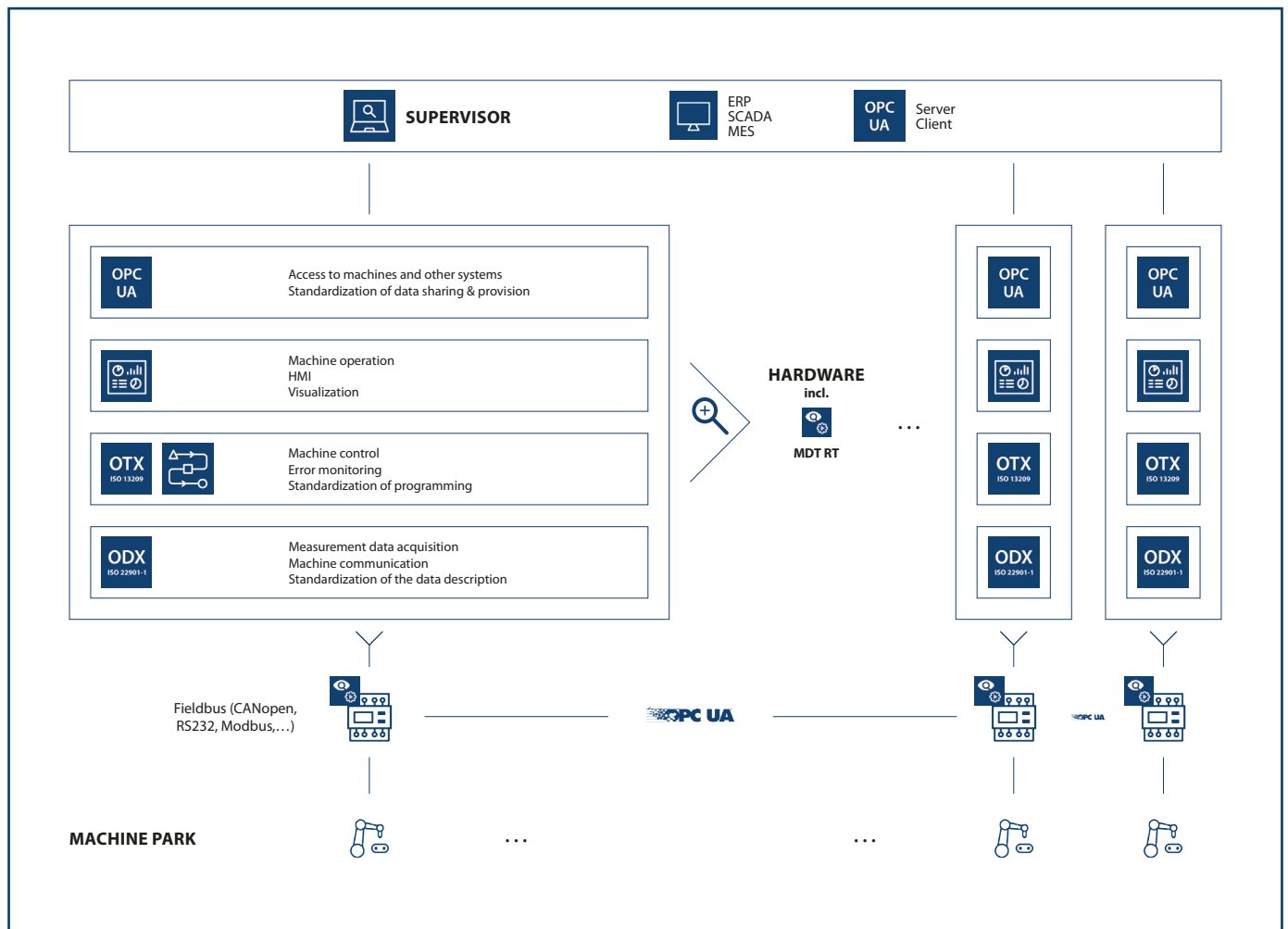
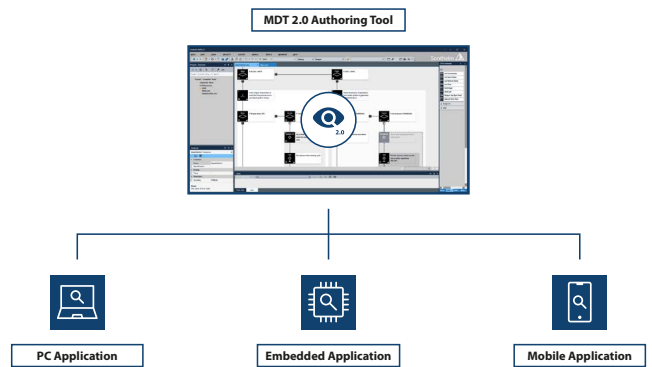
The new MDT[®] 2.0 is a standardized tool to access data of the machines. It enables the standardization of the data description (ODX), the programming (OTX) and the sharing & provision of the data (OPC UA). With the MDT[®] 2.0 tool chain, you have various options for creating, structuring and implementing test bench workflows, based on the industry standard OTX (Open Test Sequence eXchange format) according to ISO 13209, while the ODX 2.2.0 standard (Open Diagnostic Data Exchange) guarantees reusability of test bench services. Thanks to the platform-independent OPC UA architecture, the information obtained can be transmitted to a supervisor and thus integrated in the entire environment.

Multiplatform support – one workflow for all end-use applications

The extremely lean runtime system is designed specifically for multi-platform applications and provides GUI support as well as a platform-independent description of the runtime workflow language. This reduces both implementation and testing efforts for your applications across multiple PC, mobile or embedded platforms. In doing so, the MDT[®] 2.0 allows you to create your test bench control once and run it on a wide variety of environments such as Windows, Linux x86, Linux ARM or QNX without any customizations.

Modern design and new graphic modules

A new, clean and modern design allows the use of Visual Studio plug-ins, for example for SVN or Git. New graphical elements such as 2D and 3D animations can be used to create your diagnostic application. The diagnostics are thus more visually appealing and the intuitive usability for the service personnel and the diagnostic user is once again significantly increased..



Order information

V940800300

MDT® 2.0 Authoring system

C940800300

MDT® 2.0 Authoring system maintenance



Mobile Automation



Industrial Automation



Diagnostics



Connectivity

We are looking forward to your enquiry!

Sontheim Industrie Elektronik GmbH

Georg-Krug-Straße 2
D-87437 Kempten
Phone: +49 (0)831 575900-0
Fax: +49 (0)831 575900-72
Email: info@s-i-e.de

Sontheim Electronic Systems L.P.

201 West 2nd Street
Davenport, IA 52801, USA
Phone: +1 563 888 1471
Email: info@sontheim-esys.com

www.s-i-e.de