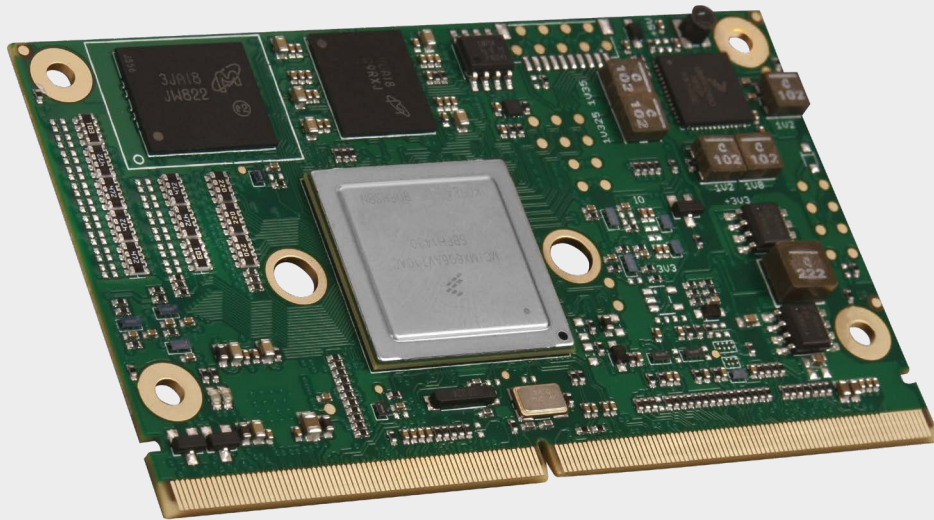


i.MX 6

Low-Power Embedded Architecture Platform





i.MX 6

The ultra-energy-saving Computer-on-Module offers an optimal price performance ratio. Scalable building blocks facilitate customized mobile and cross-linked embedded solutions based on ARM technology.

Key Features



Freescale i.MX 6 (Single, Dual, Quad Core, 800 MHz up to 1.2 GHz)



Up to 4 GB DDR3 memory



Onboard 10/100/1000 Mbit LAN



Numerous interfaces, e.g. 3× USB 2.0, 3× PCIe



Extended temperature range



Evaluation board on-demand

Scalable performance and compact form factor

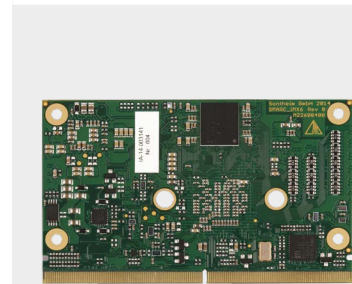
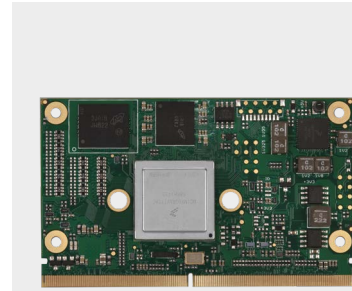
The i.MX 6 board from Sontheim is based on a 314-pin MXM 3.0 connector and a size of 82 mm × 50 mm. This creates extremely compact, durable and cost-effective development potentialities for mobile embedded hand-held systems as well as little portable, stationary and in-vehicle devices that can be used in various application fields.

Designed for commercial and industrial temperature range

Beside the standard, the i.MX 6 board is ruggedized for an extended industrial temperature range from -40°C up to $+85^{\circ}\text{C}$. This leads to various applications in the automotive sector, in automation, medical technology and further work environments that don't correlate the commercial temperature range and involve harsh environmental conditions. Furthermore, an evaluation board is available on request.

Technical Data

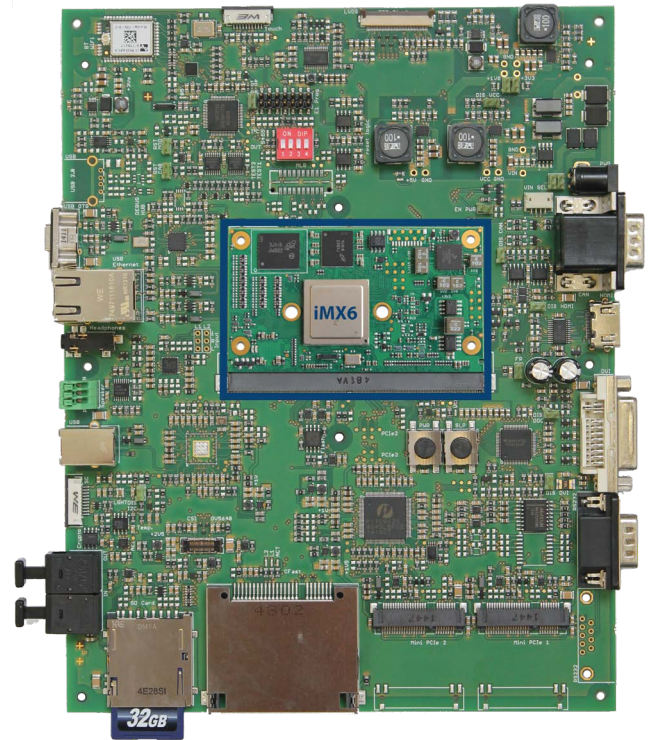
CPU	Freescale i.MX6 Single, Dual and Quad Core ARM Cortex-A9 800 MHz, 1 GHz and 1,2 GHz
Graphic	Dual Display HD 1080p encoded and decoded 2D and 3D Speed-up
RAM	DDR2 or DDR3 up to 4 GB
Memory	up to 64 GB NAND/eMMC on-module (customized)
USB	3x USB 2.0
Ethernet	10/100/1000 Mbit LAN
Display	Parallel LCD 18/24 bit LVDS single channel 18/24 bit HDMI
Image Capture Interface	2 interfaces (PCAM, CSI)
Serial interfaces	2x RX/TX (Ser 1/3); 2x UART (Ser 0/2)
Further interfaces	up to 3x PCIe, MLB150, 12x GPIOs, SDIO, SATA eMMC, 2x SPI, 5x I ² C, 2x I ² S, SPDIF WDT, 2x CAN, battery and system management
Operating system support	Linux Windows embedded compact 7 (on request) Android (on request)
Operating temperature	0°C up to +60°C, extended range: -40°C up to +85°C
Dimensions	SMARC standard: 82 mm x 50 mm



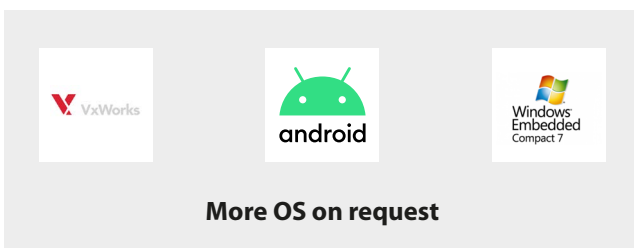
IO features of the 314-pin MXM 3.0 connector



Evaluation board



Supported operating systems





Mobile Automation



Industrial Automation



Diagnostics



Connectivity

We are looking forward to your enquiry!

Sontheim Industrie Elektronik GmbH

Georg-Krug-Straße 2
D-87437 Kempten
Phone: +49 (0)831 575900-0
Fax: +49 (0)831 575900-72
Email: info@s-i-e.de

Sontheim Electronic Systems L.P.

201 West 2nd Street
Davenport, IA 52801, USA
Phone: +1 563 888 1471
Email: info@sontheim-esys.com

www.s-i-e.de